



ceramiche
campogalliano®

PANAREA PANAREA PANAREA

PANAREA PANAREA

PANAREA



Panarea Black 30x60cm (12"x24")

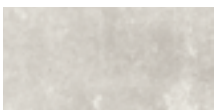


BOGART PIANO CO.
NEW YORK

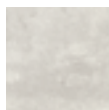


Panarea White 100x100cm (40"x40")

FORMATIE FINITURE SIZES AND FINISHES
FORMATI NOMINALI NOMINAL SIZES



30x60cm (12"x24")
 Nat/Rett



30x30cm
 (12"x12") Rett



60x60cm (24"x24") Rett



100x100cm (40"x40") Rett



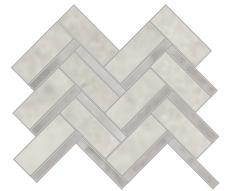
50x100cm (20"x40") Rett



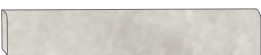
7,5x15cm
 (3"x6") Rett



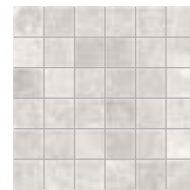
7,5x30cm
 (3"x12") Rett



Panarea White
 Freccia
 33,3x37,5cm
 (13¹/₈"x14³/₄")



Panarea battiscopa 7x60cm (2³/₄"x24") Nat/Rett
 Panarea battiscopa 7x100cm (2³/₄"x40") Rett

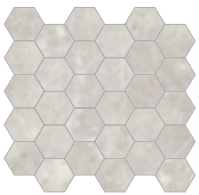


Panarea White
 Mosaico
 5x5cm (2"x2")
 30x30cm (12"x12")

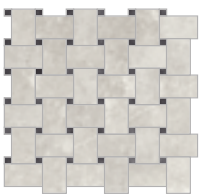


Centuries/Panarea
 Mosaico Decorato
 5x5cm (2"x2")
 30x30cm (12"x12")

PANAREA WHITE



Panarea White
Hexagon
29,3x29,4cm
(11¹/₂"x11¹/₂")



Panarea White
Basketweave
31,2x31,2cm
(12¹/₄"x12¹/₄")



FORMATIE FINITURE SIZES AND FINISHES
FORMATI NOMINALI NOMINAL SIZES



30x60cm (12"x24")
 Nat/Rett



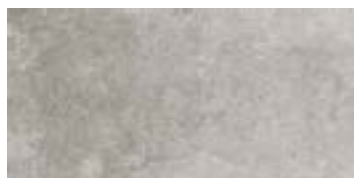
30x30cm
 (12"x12") Rett



60x60cm (24"x24") Rett



100x100cm (40"x40") Rett



50x100cm (20"x40") Rett



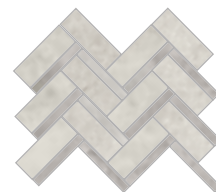
Panarea battiscopa 7x60cm (2³/₄"x24") Nat/Rett
 Panarea battiscopa 7x100cm (2³/₄"x40") Rett



7,5x15cm
 (3"x6") Rett



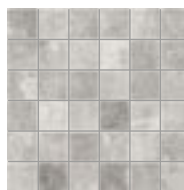
7,5x30cm
 (3"x12") Rett



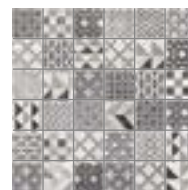
Panarea White
 Freccia
 33,3x37,5cm
 (13¹/₈"x14³/₄")



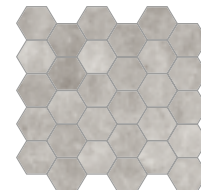
Antique Pisa/Grey
 Cassettone
 39x39cm
 (15¹/₃"x15¹/₃")



Panarea Grey
 Mosaico
 5x5cm (2"x2")
 30x30cm (12"x12")



Centuries/Panarea
 Mosaico Decorato
 5x5cm (2"x2")
 30x30cm (12"x12")



Panarea Grey
 Hexagon
 29,3x29,4cm
 (11¹/₂"x11¹/₂")

PANAREA GREY



Panarea Grey 60x60cm (24"x24")



Panarea Black 60x60cm (24"x24")
 Antique Pisa/Black Cassettone 39x39cm (15¹/₃"x15¹/₃")
 Panarea White 7,5x30cm (3"x12")

FORMATIE FINITURE SIZES AND FINISHES
FORMATI NOMINALI NOMINAL SIZES



30x60cm (12"x24")
 Nat/Retto



30x30cm
 (12"x12") Retto



60x60cm (24"x24") Retto



100x100cm (40"x40") Retto



50x100cm (20"x40") Rett+



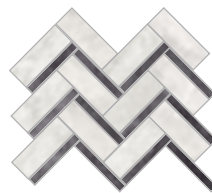
Panarea battiscopa 7x60cm (2³/₄"x24") Nat/Retto
 Panarea battiscopa 7x100cm (2³/₄"x40") Retto



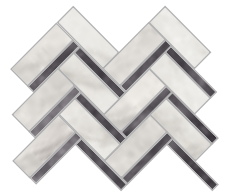
7,5x15cm
 (3"x6") Retto



7,5x30cm
 (3"x12") Retto



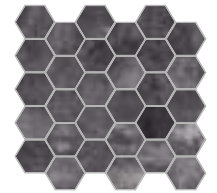
Antique Pisa
 Freccia
 33,3x37,5cm
 (13¹/₈"x14³/₄")



Antique Florence
 Freccia
 33,3x37,5cm
 (13¹/₈"x14³/₄")

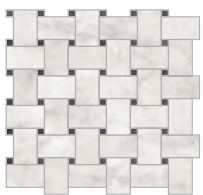


Panarea Black
 Freccia
 33,3x37,5cm
 (13¹/₈"x14³/₄")

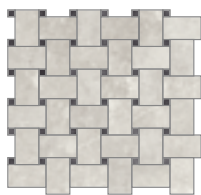


Panarea Black
 Hexagon
 29,3x29,4cm
 (11¹/₂"x11¹/₂")

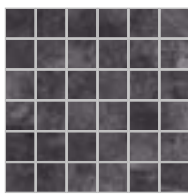
PANAREA BLACK



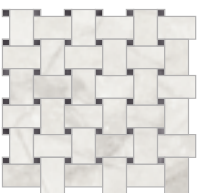
Antique Pisa
Basketweave
31,2x31,2cm
(12¹/₄"x12¹/₄")



Panarea White
Basketweave
31,2x31,2cm
(12¹/₄"x12¹/₄")



Panarea Black
Mosaico
5x5cm (2"x2")
30x30cm (12"x12")



Antique Florence
Basketweave
31,2x31,2cm
(12¹/₄"x12¹/₄")



Antique Pisa/Black
Cassettone
39x39cm
(15¹/₃"x15¹/₃")



Centuries/Panarea
Mosaico Decorato
5x5cm (2"x2")
30x30cm (12"x12")



Panarea Black Hexagon 29,3x29,4cm (11¹/₂"x11¹/₂"")

Panarea White 30x60cm (12"x24") - Centuries/Panarea Mosaico Decorato 5x5cm (2"x2"")



Panarea White Basketweave 31,2x31,2cm (12¹/₄"x12¹/₄"")
Panarea White Mosaico 5x5cm (2"x2")
Panarea White Battiscopa 7x60cm (2³/₄"x24")

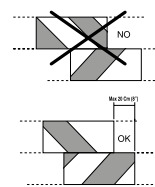


Panarea Black Freccia 33,3x37,5cm (13¹/₈"x 14³/₄"")

Caratteristiche Tecniche • Technical features • Technische eigenschaften*

Gres porcellanato impasto colorato - Colored body porcelain stoneware - Durchgefärbtes feinsteinzeug - UGL

	NORME TEST N°	DESCRIZIONE DESCRIPTION	VALORE A NORMA REQUIRED STANDARD	VALORE RESULTS
	ISO 10545/3	ASSORBIMENTO D'ACQUA - WATER ABSORPTION ABSORPTION D'EAU - WASSERAUFNAHME	≤ 0.5%	CONFORME CONFORMS
	ISO 10545/4	RESISTENZA ALLA FLESSIONE - BENDING STRENGTH RESISTANCE A LA FLEXION - BIEGESTÄRKE	R ≥ 35 N/mm ²	CONFORME CONFORMS
	ISO 10545/8	COEFFICIENTE DI DILATAZIONE TERMICA LINEARE THERMAL EXPANSION COEFF. BETWEEN 20°C - 100°C COEFF. DE DILATATION THERMIQUE LINEAIRE ENTRE 20°C ET 100°C WÄRMEAUSSDEHNUNG ZWISCHEN 20°C UND 100°C	< 9x10 ⁻⁶ C ⁻¹	8x10 ⁻⁶ C ⁻¹
	ISO 10545/9	RESISTENZA AGLI SBALZI TERMICI - RESISTANCE TO THERMAL SHOCK RESISTANCE AUX CHOCS THERMIQUES TEMPERATURWECHSELBESTÄNDIGKEIT		RESISTE - RESISTANT RESISTE - BESTÄNDIG
	ISO 10545/11	RESISTENZA AL CAVILLO - CRAZING RESISTANCE RESISTANCE AU TRASSAILAGE - HAARRISSEFESTIGKEIT		RESISTE - RESISTANT RESISTE - BESTÄNDIG
	ISO 10545/14	RESISTENZA ALLE MACCHIE - STAIN RESISTANCE RESISTANCE AUX TACHES - FLECKENFESTIGKEIT	min. Classe 3	CONFORME CONFORMS
	ISO 10545/13	RESISTENZA ALLATTACCO CHIMICO - CHEMICAL RESISTANCE RESISTANCE À L'ATTAQUE CHIMIQUE - FÄHIG GEGEN SÄUREN UND LAUGEN	min. B	CONFORME CONFORMS
	ISO 10545/2	LUNGHEZZA E LARGHEZZA - LENGTH AND WIDTH LONGUEUR ET LARGEUR - LÄNGE UND BREITE	± 0.5%	CONFORME CONFORMS
	ISO 10545/2	SPESSORE - THICKNESS ÉPAISSEUR - STÄRKE	± 5%	CONFORME CONFORMS
	ISO 10545/2	ORTOGONALITÀ - WEDGING ORTHOGONALITÉ - RECHTWINKLICHKEIT	± 0.6%	CONFORME CONFORMS
	ISO 10545/2	PLANARITÀ - WARPAGE PLANÉITÉ - EBENFLÄCHIGKEIT	± 0.5%	CONFORME CONFORMS
	ISO 10545/12	RESISTENZA AL GELO - FROST RESISTANCE RESISTANCE AU GEL - FROSTBESTÄNDIGKEIT		RESISTE - RESISTANT RESISTE - BESTÄNDIG
	ISO 10545/6	RESISTENZA ALLABRASIONE PROFONDA - DEEP ABRASION RESISTANCE RESISTENCE À L'ABRASION PROFONDE - TIEFENVERSCHLEISSBESTÄNDIGKEIT	< 175 mm ³	125 mm ³
	ANSI A 137.1-2012 BOT 3000 WET DCOF	RESISTENZA ALLO SCIVOLAMENTO SLIP RESISTANCE - RESISTANCE AU GLISSEMENT BESTIMMUNG DER RUTSCHEMÜNDE EIGENSCHAFT	≥ 0.42	Tile 1: 0.56 Tile 2: 0.55 Tile 3: 0.55
	DIN 51130 R	water, oil, grease, etc. create slippery conditions. If or applications with exposure to these conditions require extra caution in product selection.		100X100 CM, R10 OTHER SIZES: R9



SOLUZIONI DI POSA
cm 30x60 - 12"x24"
cm 50x100 - 20"x40"
Per una corretta realizzazione si consiglia di posare i formati lunghezza 60 cm e 100 cm sfalsati a correre al massimo 20 cm o posa pari.

INSTALLATION INFORMATION
cm 30x60 - 12"x24"
cm 50x100 - 20"x40"
For 60 cm (24") and 100 cm (40") long tiles, staggering should not exceed 20 cm (8").

VERLEGEBEISPIELE
cm 30x60 - 12"x24"
cm 50x100 - 20"x40"
Für einen korrekten und einwandfreien Belag, die Formate mit 60 cm und 100 cm Länge sollten bei der Verlegung maximal 20 cm versetzt sein.

Noi consigliamo fortemente l'uso di un sistema di posa con distanziatori autoivellanti.

Wir empfehlen dringend die Verwendung von einem Befestigungssystem mit leveling system.

We strongly recommend using a tile edge leveling system during installation.

Il est vivement recommandé l'utilisation d'un système de pose avec des croisillons autoivellants.

SHADE VARIATION



*These test results may change from lot to lot

IMBALLI PACKAGING

UNITÀ DI MISURA
UNIT OF MEASURES



Model	Dimensions	Unit	Pallets	KG	m ²	Boxes	Weight
Panarea Rett	100x100 (40"x40")	M ²	1	20,78	1,00	42	42,00 872,75
Panarea Rett	50x100 (20"x40")	M ²	2	20,78	1,00	42	42,00 872,75
Panarea Rett	60x60 (24"x24")	M ²	3	24,80	1,08	40	43,20 992,00
Panarea	30x60 (12"x24")	M ²	6	25,50	1,11	40	44,40 1020,00
Panarea Rett	30x60 (12"x24")	M ²	6	24,80	1,08	40	43,20 992,00
Panarea Rett	30x30 (12"x12")	M ²	11	22,45	0,99	48	47,52 1077,60
Panarea Rett	7,5x30 (3"x12")	M ²	17	9,03	0,38	84	31,92 758,52
Panarea Rett	7,5x15 (3"x6")	M ²	50	13,00	0,57	76	43,32 988,00
Panarea Mosaico 5x5 (2"x2")	30x30 (12"x12")	FOGLIO/SHEET	8	16,14	0,72	42	30,24 677,88
Panarea Hexagon	29,3x29,4 (11 ¹ / ₂ "x11 ¹ / ₂ ")	FOGLIO/SHEET	8	14,50	0,63	42	26,46 609,00
Panarea Basketweave	31,2x31,2 (12 ¹ / ₄ "x12 ¹ / ₄ ")	FOGLIO/SHEET	8	17,45	0,78	42	32,76 732,90
Panarea Freccia	33,3x37,5 (13 ¹ / ₈ "x14 ³ / ₄ ")	FOGLIO/SHEET	8	14,50	0,60	42	25,20 609,00
Panarea Cassettone	39x39 (15 ¹ / ₃ "x15 ¹ / ₃ ")	FOGLIO/SHEET	8	16,14	0,72	42	30,24 677,88
Panarea Battiscopa	7x60 (2 ³ / ₄ "x24")	PZ	15	14,00	-	40	- 560,00
Panarea Battiscopa Rett	7x60 (2 ³ / ₄ "x24")	PZ	15	14,00	-	40	- 560,00
Panarea Battiscopa Rett	7x100 (2 ³ / ₄ "x40")	PZ	7	10,08	-	40	- 403,20

ceramiche
campogalliano

info@ceramichecampogalliano.it
www.ceramichecampogalliano.it
tel +39 0536 832393 - fax +39 0536 913591



Ceramics of Italy

a brand of **Verde 1999**
ITALIAN CERAMICS

Verde 1999 srl - Via Ghiarola Nuova, 158
41042 Fiorano Modenese, MO Italy
tel +39 0536 832393 - fax +39 0536 913591
www.verde1999.com - info@verde1999.com

made in Italy
100%